

MAGO

MAKE THE DIFFERENCE



CLEVER

The background of the entire image is a dark, futuristic cityscape. On the left side, there are several tall, rectangular buildings. Some of these buildings have vertical lines of bright blue light running up their sides, resembling windows or data streams. In the foreground, there are glowing blue lines that look like circuitry or data paths, winding across a dark, reflective surface. The overall color palette is dominated by dark blues, blacks, and bright cyan/blue highlights.

CLEVER FAMILY

Shopping on your own terms, without lines and without having to involve staff. With CLEVER, anything is possible. The intelligent cart is an innovative solution that allows customers to manage the entire shopping process independently without the need for staff assistance.

AWARDS:



HELLO CLEVER!

The CLEVER cart makes shopping a pleasant and easy experience. Customers can avoid having to move products multiple times, reducing shopping time and making the whole process easier. With CLEVER, the store is relieved, and retailers can precisely control the customer's shopping process and adapt their actions to their choices.

CLEVER:

- gives the ability to perform up-selling and cross-selling actions
- gives the ability to make self-service purchases with minimal staff support
- is a helpful assistant for information about the article, its price, and product location
- can integrate with unified commerce channels
- can integrate with other solutions in the MAGO ecosystem - self-service checkouts, payment stations, exit gates
- increases the prestige of the shop
- enables building attractive loyalty programs

cleve®





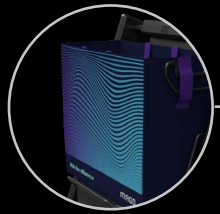
FUNCTIONALITIES



LED INDICATORS SHOWING TRANSACTION STATUS

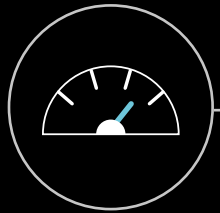
Three colour codes to show the trolley status:

- GREEN LIGHT – the trolley is free,
- BLUE LIGHT – the trolley is in use,
- RED LIGHT – purchase uthorisation, payment process or staff assistance required.



SHOPPING BAG

Once your shopping is finished, you simply take the bag off the handles of the scale and take it with you. This solution combines convenience and sustainable development: there's no need to purchase additional shopping bags or repack goods multiple times.



CERTIFIED SCALES

Weighing of bulk products, vegetables and fruit, verification of product scanning accuracy.



MULTI-FUNCTION TOUCH-SCREEN

- enables cashless payments
- classifies products without codes (such as vegetables, bread)
- displays appropriately selected advertising content, dedicated promotions
- displays a real-time shopping list and product prices
- can be integrated with the retail chain's POS application

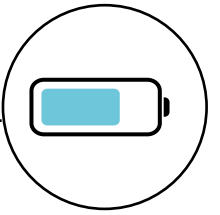
INTEGRATION WITH A SELECTED PAYMENT GATEWAY

The possibility of electronic payment.



CONVENIENT PRODUCT SCANNING

The scanner integrated with the trolley handle enables seamless EAN and QR code reading.



HIGH-PERFORMANCE BATTERYA

Guarantees 17 hours of continuous operation.



CLEVER + ACCESORIES



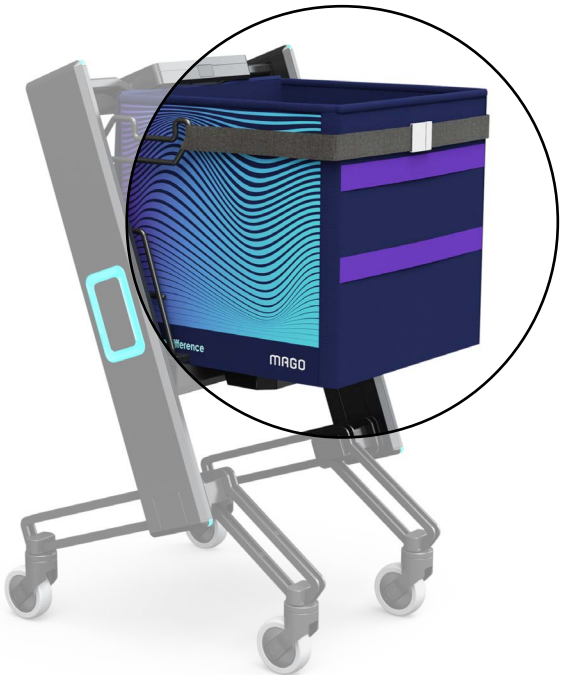
CLEVER STANDARD



CLEVER + IMAGE RECOGNITION



CLEVER SLIM



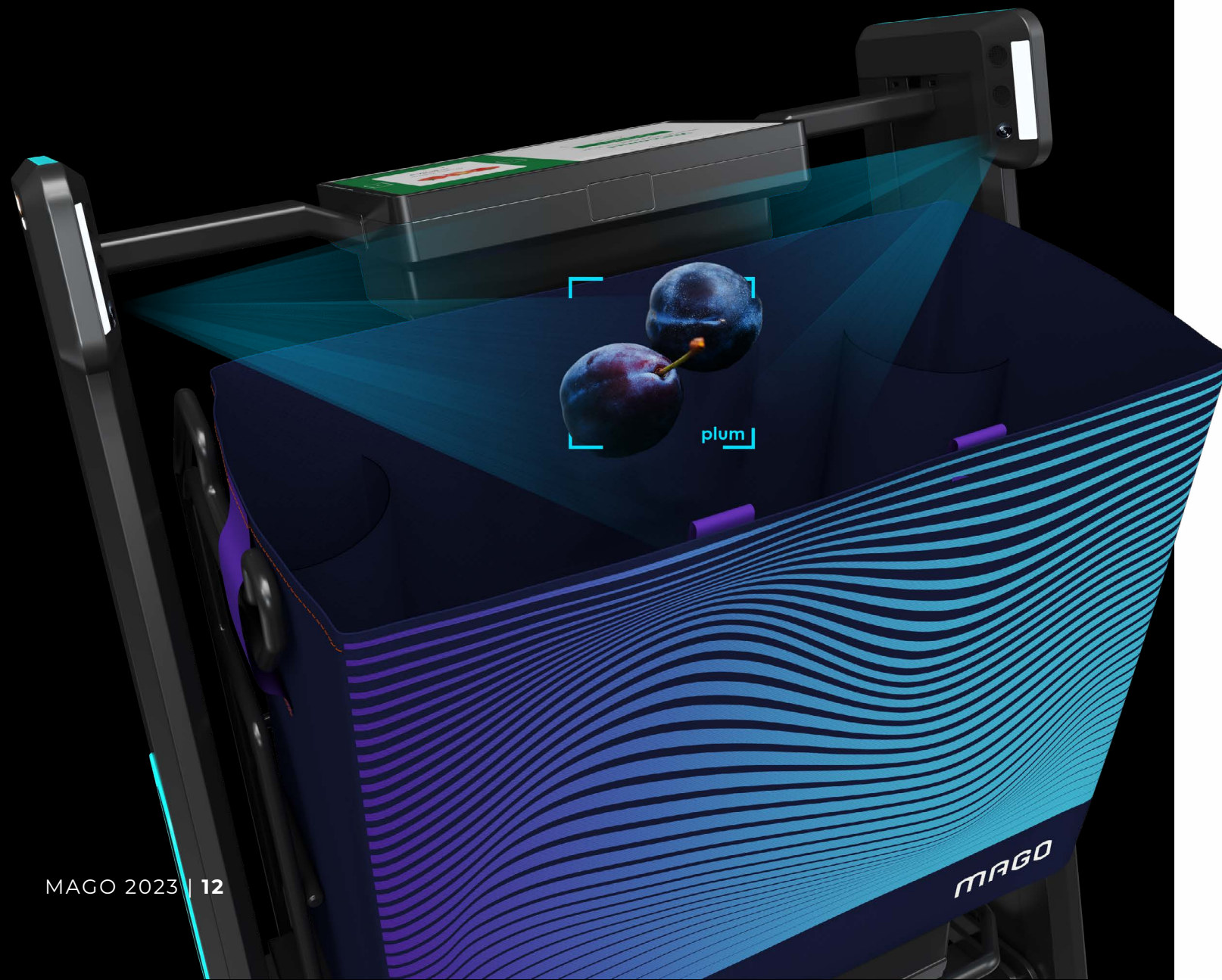
CLEVER + COURIER BAG



CLEVER + ADDITIONAL SHELF

CLEVER + IMAGE RECOGNITION

CLEVER + Image Recognition has been enhanced with the **Digital Signage system**. This combination takes the customer's shopping experience to the next level. **The image recognition mechanism impacts the security of purchases and shortens the time needed to identify products without codes.**



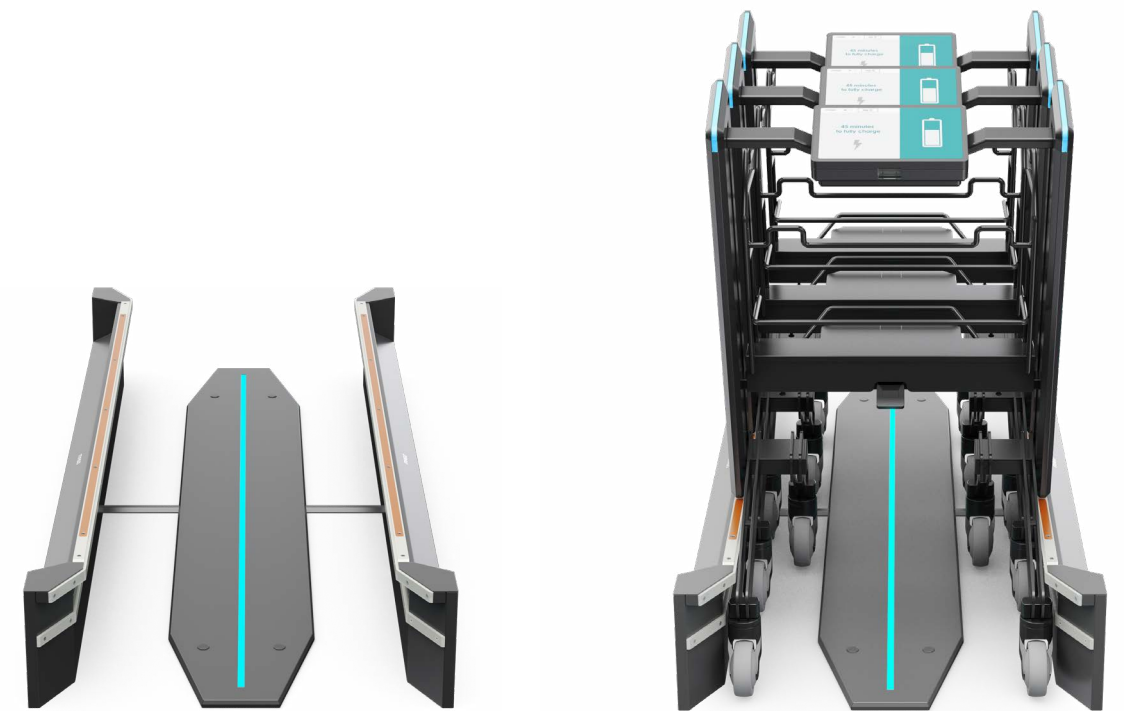
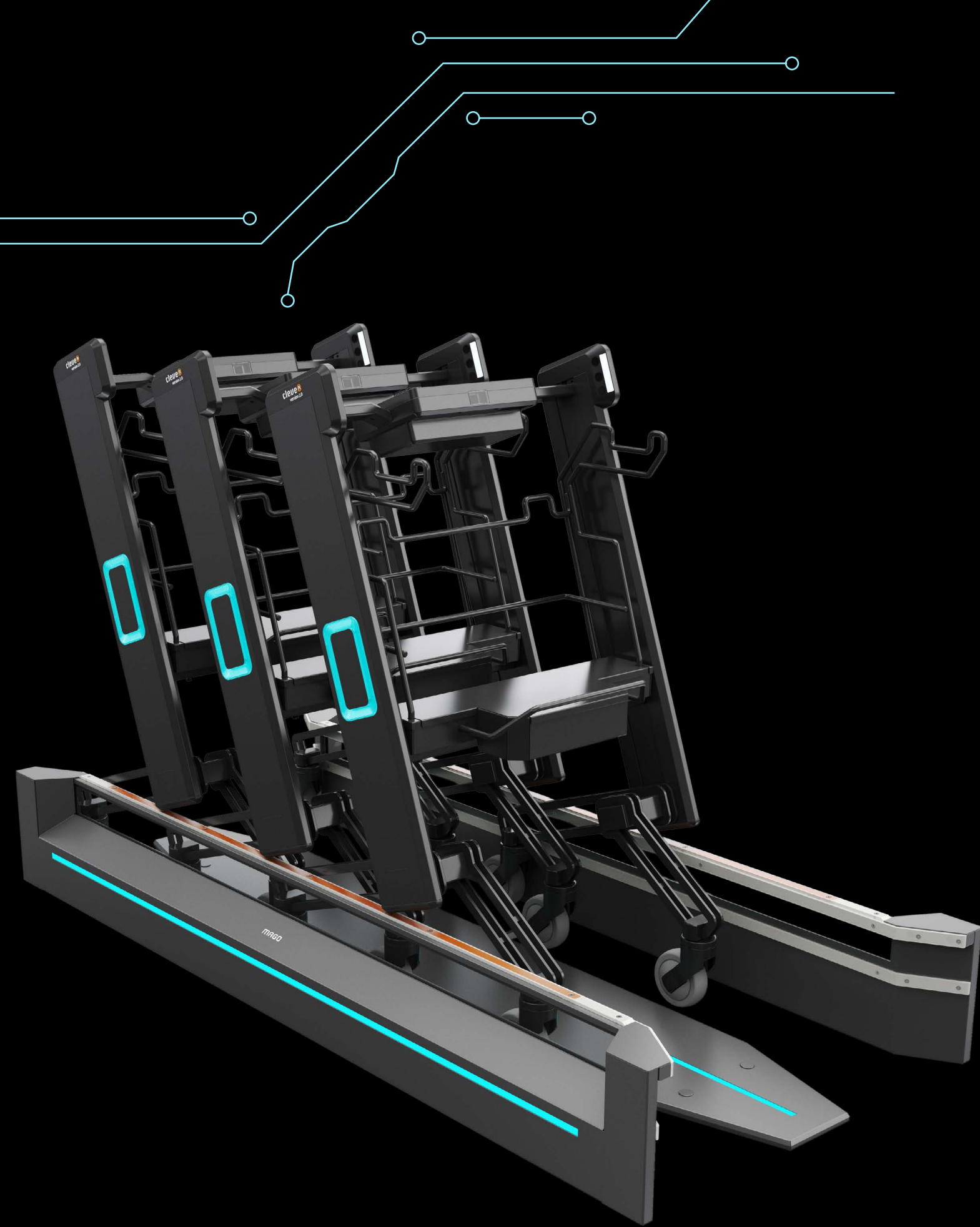
FULLY FUNCTIONAL IN NEW SIZE

CLEVER is available in two sizes: **STANDARD** and **SLIM**.

The SLIM version is tailored to the needs of **retail spaces in drugstores**. The cart is **narrower** and **lighter**. It has a **dedicated cosmetic bag** that can be carried over the shoulder after shopping.

- the cart is available in a new, more delicate color version
- the ability to build loyalty programs using customer identification mechanisms - for example, rewarding purchases with CLEVER bags





The charging station allows continuous operation, independent of overnight charging.



CLEVER + COURIER BAG

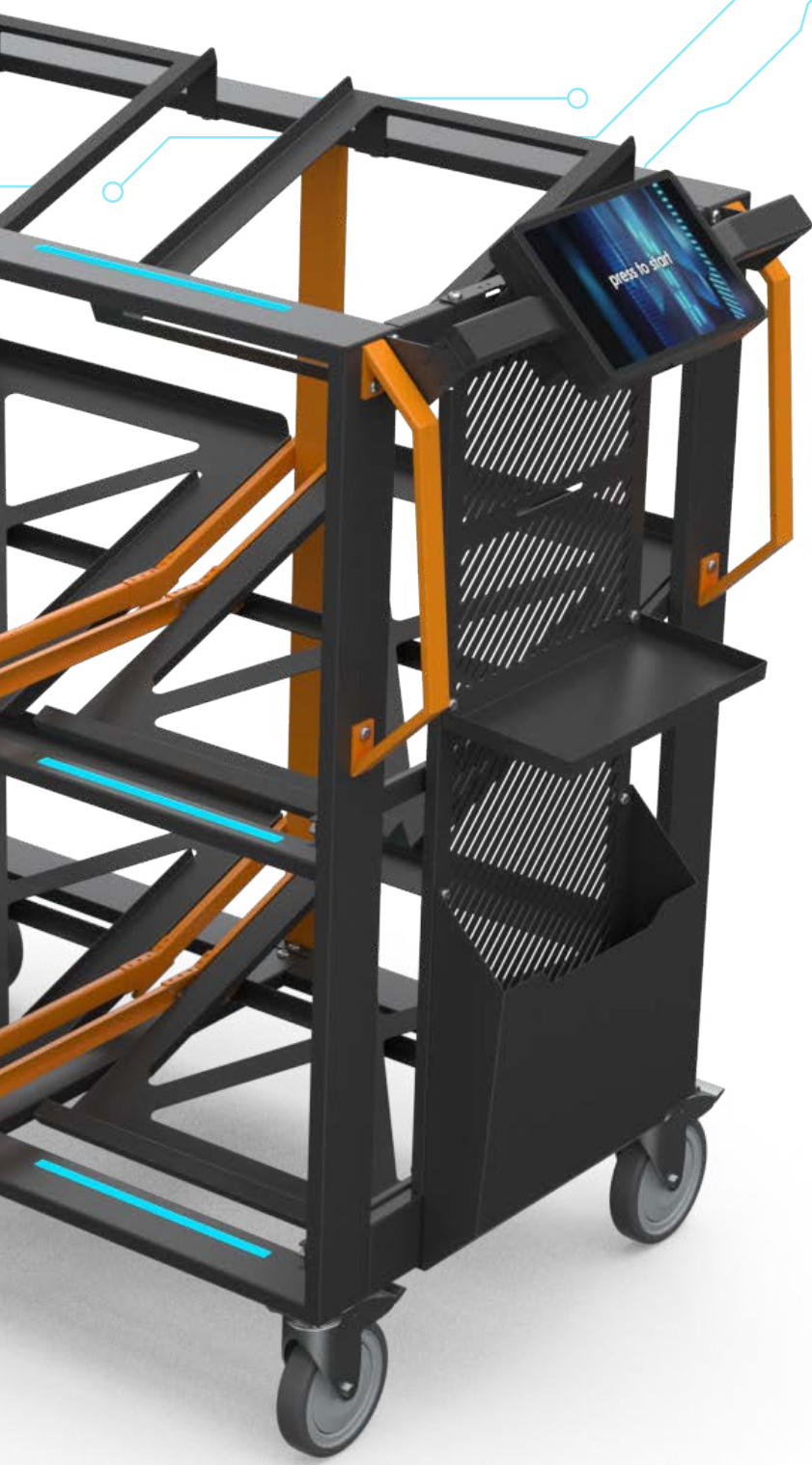
It is an extension of the basic version of the cart, which includes a courier bag attachment. **This allows purchases to be packed directly into the bag, simplifying the order fulfillment process.**

CLEVER + ACCESORIES

CLEVER + ADDITIONAL SHELF

The **additional shelf** for heavier items does not take up space for other products in the bag. **Purchasing bulky products does not require assistance from an assistant or use of a self-service checkout.**





SPECIAL TASK CARTS

Discover new tools that support, simplify, and speed up the e-commerce order fulfillment process. Picking Cart and CLEVER adapted for courier bag mounting are solutions designed for store employees, warehouses, and quick commerce couriers. An important part of the solution is the DSM (Digital Store Map) application, which indicates the optimal order of products and the fulfillment path. In the case of the Picking Cart, even up to 6 orders can be optimized simultaneously.

The solution provides:

- increased work efficiency through the identification of the shortest paths to reach the products
- up-to-date information on the location of the product and the progress of placing the order
- possibility of use in warehouses, dark stores, and shops



MAGO GROUP

HEADQUARTER

📍 Rusiec, aleja Katowicka 119/121
05-830 Nadarzyn
☎ +48 22 729 81 01
✉ sprzedawcy@mago.com

www.mago.com

OFFICES

MAGO
GERMANY
📍 Westhafenstr. 1
13353 Berlin
☎ +49 173 269 70 46
✉ verkauf@mago.com

MAGO
FRANCE
📍 113 Chemin De Ronde
78290 Croissy Sur Seine
☎ +33 (0) 1 30 53 71 90
✉ commerce@mago.com

MAGO
ITALY
📍 Via Caselle, 76
40068 San Lazzaro Di Savena
☎ +39 (0) 5 14 84 63 56
✉ italia@mago.com

MAGO
UKRAINE
📍 Kostantinovska 75/309
04080 Kiev
☎ +38 (067) 328 77 99
✉ kiev@mago.com

FACTORIES

POLAND
📍 Rusiec,
aleja Katowicka 119/121
05-830 Nadarzyn

POLAND
MGL Sp. z o.o.
MAGO GROUP
📍 ul. Opoczyńska 16
96-200 Rawa Mazowiecka

● MAGO OFFICE

● FACTORIES

● OFFICES

● DISTRIBUTORS



EUROSHOP 2023

MAGO

www.mago.com